

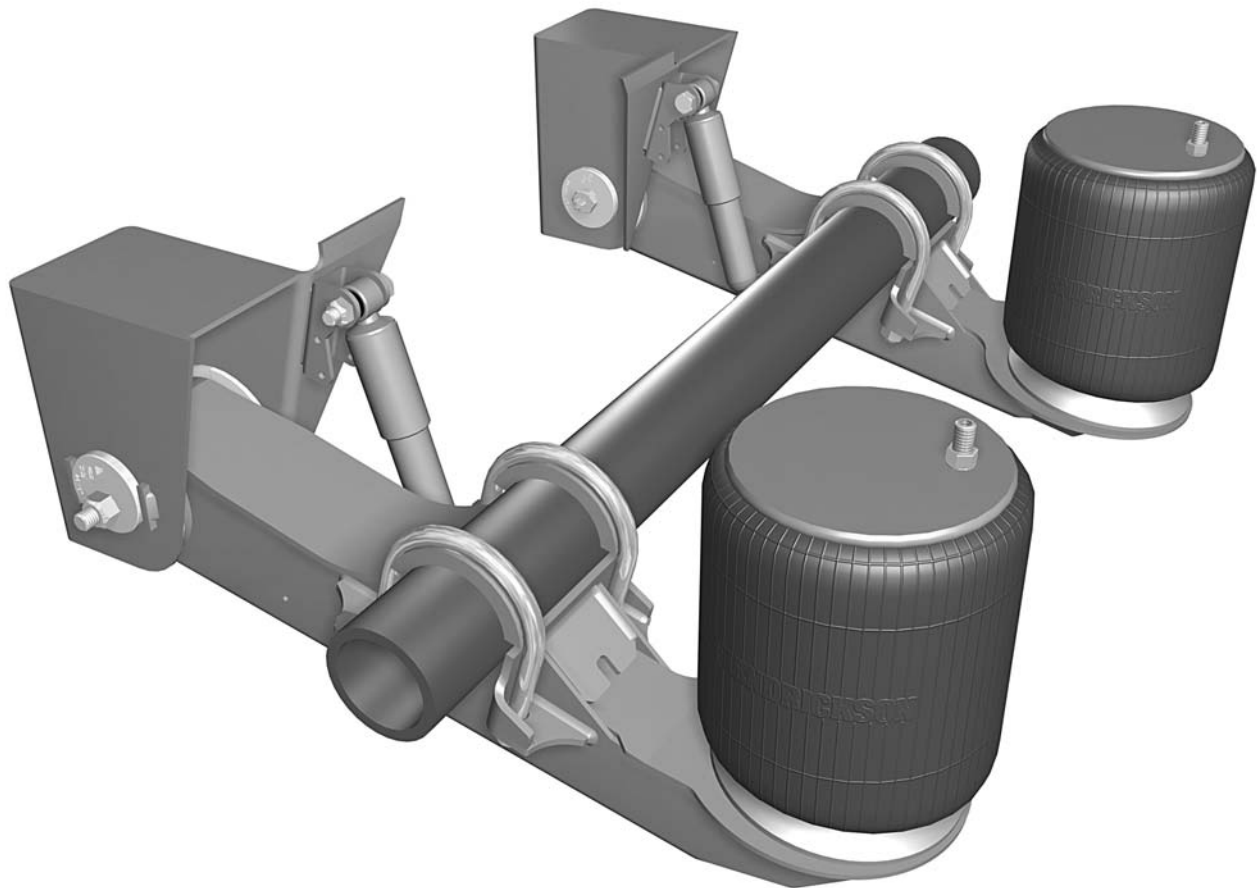
H PARTS LIST

HT250US

LIT NO: L582

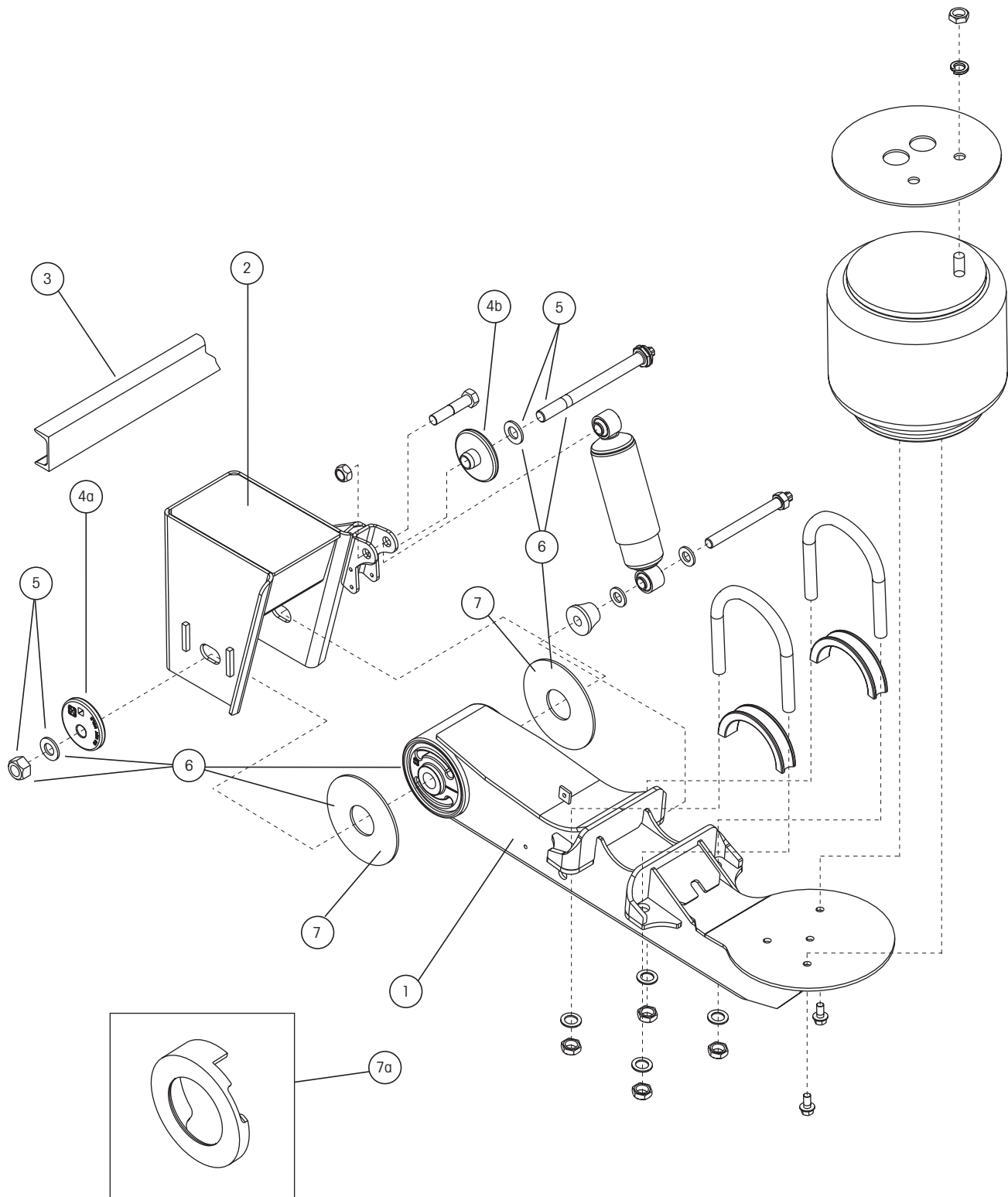
DATE: September 2002

REVISION: A



For The Road Ahead™

H HENDRICKSON

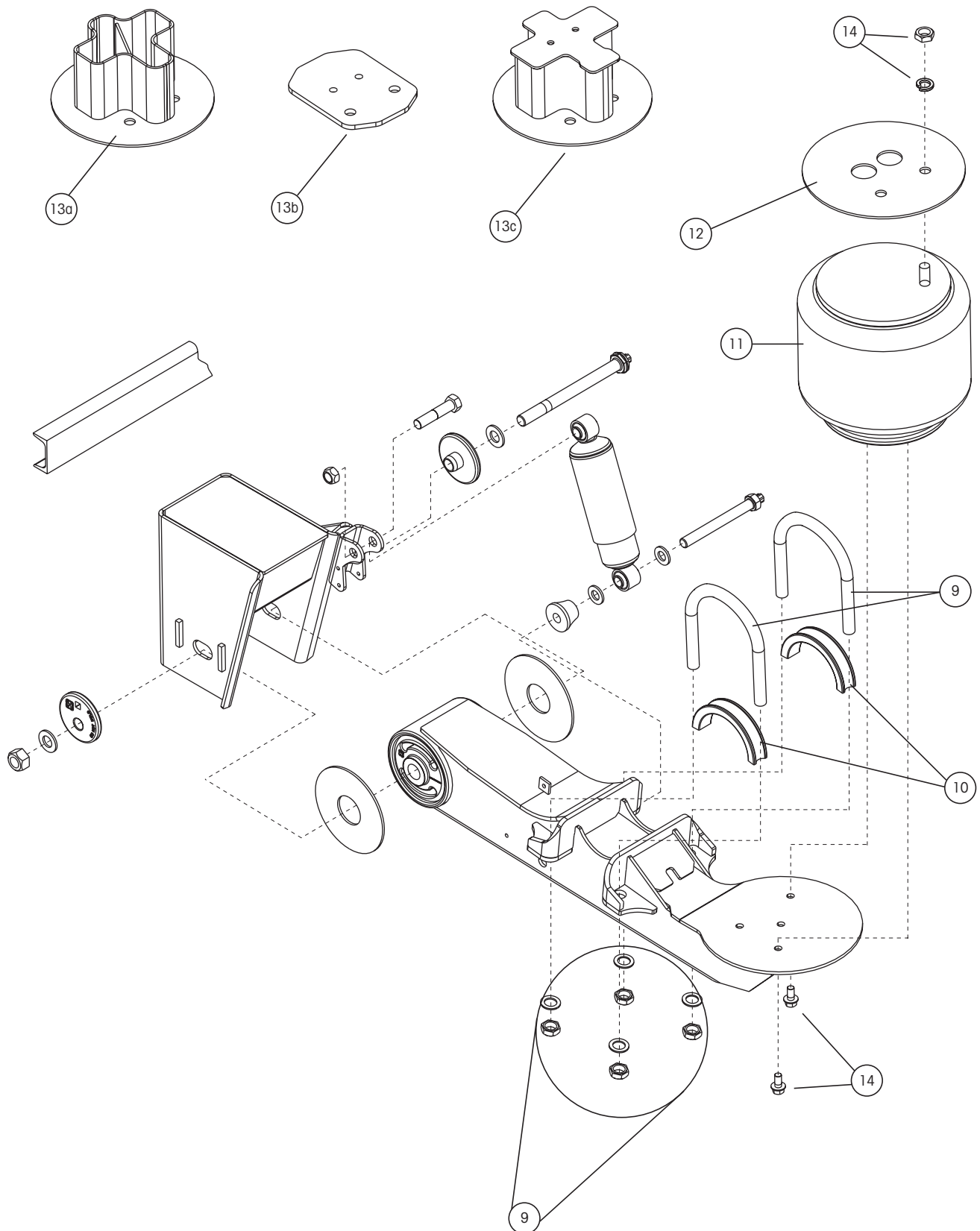




ITEM	DESCRIPTION	PART NO.	QTY.	NOTE
Available in ride heights of 3.5", 4", 5.5", 6.5", 7.5", 9", 12", 14"				
1	BEAM ASSEMBLY			
	Roadside	D-24186-1	1	Includes bushing
	Curbside	D-24186-2	1	Includes bushing
2	FRAME BRACKET ASSEMBLY¹ (Ride Height Specific)			
	Weld-on, 3.5" and 4" Standard Travel			
	Roadside	C-23848-1	1	Measures 4.5" from center of pivot hole to top plate;
	Curbside	C-23848-2	1	8" overall height
	Weld-on, 5.5" and 6.5" RH, Standard Travel			
	Roadside	D-22826-1	1	Measures 8" from center of pivot hole to top plate;
	Curbside	D-22826-2	1	11.5" overall height
	Weld-on, 6.5" RH, Limited Jounce — Weld-on, 7.5" and 9" RH Standard Travel and Limited Jounce			
	Roadside	D-22827-1	1	Measures 10" from center of pivot hole to top plate;
	Curbside	D-22827-2	1	13.5" overall height
	Weld-on, 12" RH, Standard Travel			
	Roadside	D-22828-1	1	Measures 12" from center of pivot hole to top plate;
	Curbside	D-22828-2	1	15.5" overall height
	Weld-on, 12" RH, Limited Jounce — Weld-on, 14" RH, Standard Travel			
	Roadside	D-22829-1	1	Measures 14" from center of pivot hole to top plate;
	Curbside	D-22829-2	1	17.5" overall height
	Bolt-on, 5.5" and 6.5" RH, Standard Travel			
	Roadside	D-23009-1	1	Measures 8.375" from center of pivot hole to top plate;
	Curbside	D-23009-2	1	11.875" overall height
	Bolt-on, 7.5" and 9" RH, Standard Travel — Bolt-on, 6.5", 7.5" and 9" RH, Limited Jounce			
	Roadside	D-23010-1	1	Measures 10.375" from center of pivot hole to top
	Curbside	D-23010-2	1	plate; 13.875" overall height
	Bolt-on, 12" RH, Standard Travel			
	Roadside	D-23011-1	1	Measures 12.375" from center of pivot hole to top
	Curbside	D-23011-2	1	plate; 15.875" overall height
	Bolt-on, 12" RH, Limited Jounce — Bolt-on, 14" RH, Standard Travel			
	Roadside	D-23012-1	1	Measures 14.375" from center of pivot hole to top
	Curbside	D-23012-2	1	plate; 17.875" overall height
3	C-CHANNEL	A-1631-19	1	
4	ALIGNMENT COLLARS			
4a	Eccentric Washer, QUIK-ALIGN®	S-20925	2	Pivot bolt hole is offset from center of collar
4b	Concentric Washer, QUIK-ALIGN	S-20924	2	Pivot bolt hole is in center of collar
5	QUIK-ALIGN PIVOT BOLT KIT	S-24679	2	Includes shear-type bolt, hexnut and hardened washers
6	TRI-FUNCTIONAL® PIVOT BUSHING KIT with QUIK-ALIGN	S-24691	2	Includes bushing, shear-type bolt, hexnut, bushing tube spacers and hardened washers
7	BUSHING TUBE SPACER	S-11613	4	Sold individually
7a	Bushing Tube Spacer — Glove Style	S-27446		Scheduled to replace item 7 in 2003. Contains 2 molded and 1 flat spacer
8	BUSHING TUBE SPACER KIT	S-26369	2	Includes shear-type bolt, hexnut, hardened washers and bushing tube spacers (Not identified)

Weld-on and Bolt-on refers to suspension frame attachment

¹ Other options exist. Contact your Customer Service Representative for specific model numbers.

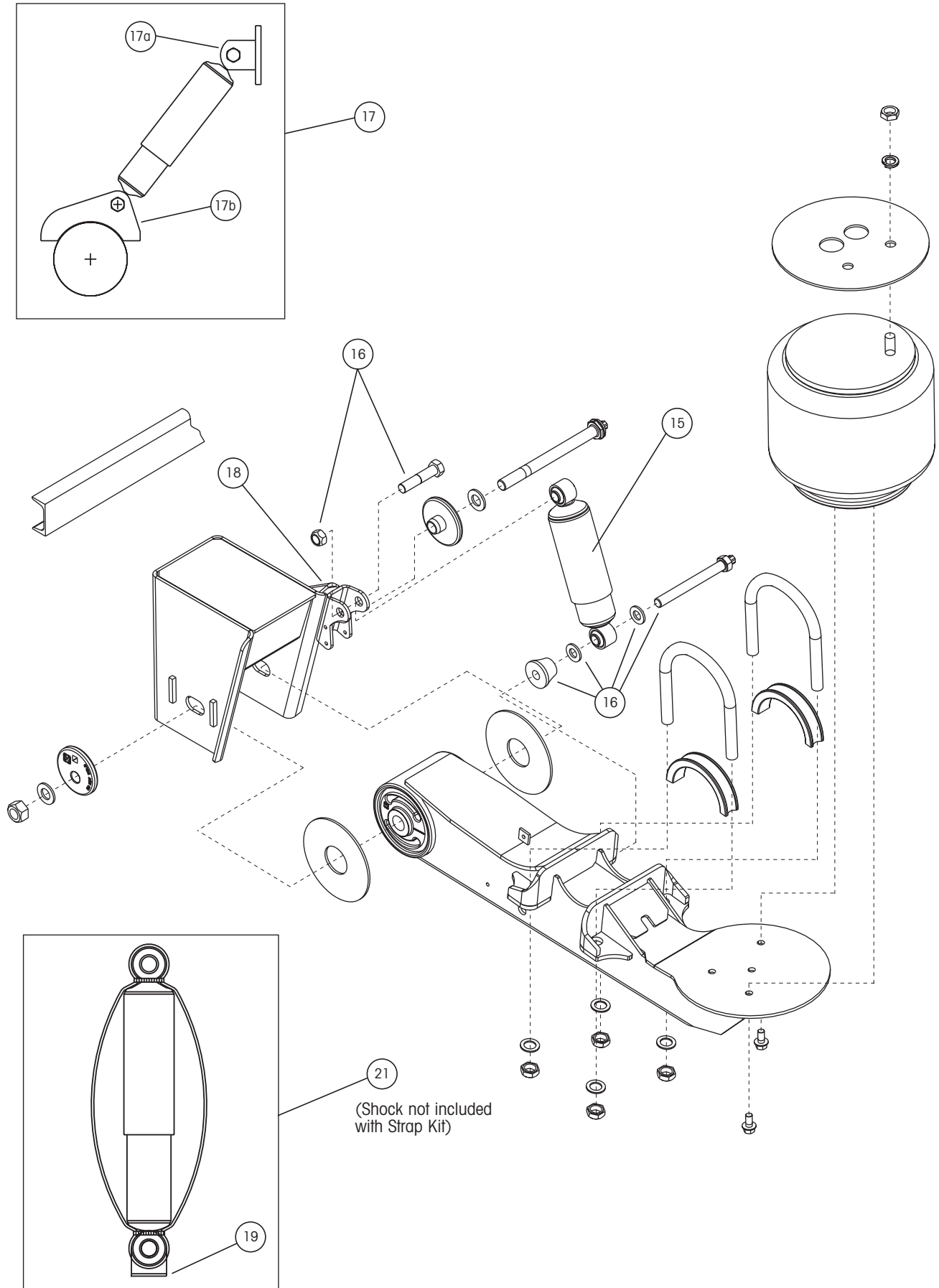




ITEM	DESCRIPTION	PART NO.	QTY.	NOTE
9	U-BOLT KIT			All kits contain (1) U-Bolt, washers and high nuts
	17.5" Tires, All Ride Heights, Standard Travel	S-22894/4	4	Flattened U-Bolt
	17.5" Tires, 6.5" to 12" RH, Limited Jounce	S-22894/4	4	Flattened U-Bolt
	17.5" Tires, 6.5" to 9" RH, Extended Rebound	S-22894/4	4	Flattened U-Bolt
	19.5" Tires, 3.5" to 4" RH, Standard Travel	S-20032/4	4	Rounded U-Bolt
	19.5" Tires, 5.5" to 6.5" RH, Standard Travel	S-22894/4	4	Flattened U-Bolt
	19.5" Tires, 7.5" to 14" RH, Standard Travel	S-20032/4	4	Rounded U-Bolt
	19.5" Tires, 6.5" to 12" RH, Limited Jounce	S-20032/4	4	Rounded U-Bolt
	19.5" Tires, 6.5" RH, Extended Rebound	S-22894/4	4	Flattened U-Bolt
	19.5" Tires, 7.5" to 9" RH, Extended Rebound	S-20032/4	4	Rounded U-Bolt
10	AXLE SPACER	S-20701	4	
11	AIR SPRING¹			
	4" RH, Standard Mounting	S-20010	2	Replace C-20010
	3.5" and 4" RH, Standard Mounting, Hi PSI Spring	S-20223	2	Replace C-20223
	5" through 14" RH, Standard Mounting	S-20127	2	Replace C-20127
	5" through 14" RH, Rotated Mounting	S-20414	2	Replace C-20414
	6.5" RH, Hi PSI, Short Bellows	S-20716	2	Replace C-20716
	7.5" through 14" RH, Hi PSI, Standard Mounting	S-20124	2	Replace C-20124
	Rotated Mounting	S-20413	2	Replace C-20413
12	AIR SPRING MOUNTING PLATE			Air spring mounting plates fit standard and rotated mounting types
	4" to 9" Weld-on, Standard Travel	B-21209	2	
	6.5" to 9" Weld-on, Extended Rebound	B-21209	2	
	5.5" to 9" Bolt-on, Standard Travel	B-21211	2	
13	AIR SPRING SPACER ASSEMBLY Spacer with mounting plate			Air spring spacers fit standard and rotated air spring mounting types
13a	6.5" and 7.5" Weld-on, Limited Jounce	C-21210-1	2	With 1" spacer Without top plate for weld-on applications
	9" Weld-on, Limited Jounce	C-21210-3	2	With 3" spacer
	12" Weld-on, Standard Travel	C-21210-3	2	With 3" spacer
	12" Weld-on, Limited Jounce	C-21210-5	2	With 5" spacer
	14" Weld-on, Standard Travel	C-21210-5	2	With 5" spacer
13b	5.5" to 9" Bolt-on, Standard Travel	B-22990-1	2	
13c	6.5" and 7.5" Bolt-on, Limited Jounce	C-21215-1	2	With 1.2" spacer With top plate for bolt-on applications
	9" Bolt-on, Limited Jounce	C-21215-3	2	With 3.2" spacer
	12" Bolt-on, Standard Travel	C-21215-3	2	With 3.2" spacer
	12" Bolt-on, Limited Jounce	C-21215-5	2	With 5.2" spacer
	14" Bolt-on, Standard Travel	C-21215-5	2	With 5.2" spacer
14	AIR SPRING MOUNTING KIT			
	3.5" and 4" RH, Weld-on, Standard Travel	S-20033/2	2	Order 1 kit per air spring
	5.5" to 14" RH, Weld-on, All Travel Specifications	S-20033/2	2	
	6.5" to 12" RH, Bolt-on, Limited Jounce	S-20033/2	2	
	5.5" to 9" RH, Bolt-on, Standard travel	S-23123/2	2	
	12" to 14" RH, Bolt-on, Standard travel	S-20033/2	2	

Weld-on and Bolt-on refers to suspension frame attachment

¹ Other options exist. Contact your Customer Service Representative for specific model numbers.





ITEM	DESCRIPTION	PART NO.	QTY.	NOTE
15	SHOCK ABSORBER			
	3.5" to 4" RH, Weld-on, Standard Travel	S-23548	2	Use to replace B-23548
	5.5" and 6.5" RH, Weld-on and Bolt-on, Standard Travel	S-23650	2	Use to replace B-23650
	7.5" to 14" RH, Weld-on and Bolt-on, Standard Travel	S-23649	2	Use to replace B-23649
	5.5" and 6.5" RH, Weld-on and Bolt-on, High Dampening	S-23744	2	Use to replace B-23744
	7.5" to 14" RH, Weld-on and Bolt-on, High Dampening	S-23743	2	Use to replace B-23743
	6.5" to 12" RH, Weld-on and Bolt-on, Limited Jounce	S-23649	2	Use to replace B-23649
	6.5" to 12" RH, Weld-on and Bolt-on, High Dampening, Limited Jounce	S-23743	2	Use to replace B-23743
	Remote location shock, weld-on frame			
	5.5" to 6.5" RH, Standard Travel	S-23650		Use to replace B-23650
	7.5" to 9" RH, Standard Travel	S-23649		Use to replace B-23649
	12" to 14" RH, Standard Travel	S-2212		Use to replace A-2212
	6.5" to 9" RH, Extended Rebound	S-2212		Use to replace A-2212
	5.5" to 6.5" RH, High Dampening, Standard Travel	S-23744		Use to replace B-23744
	7.5" to 9" RH, High Dampening, Standard Travel	S-23743		Use to replace B-23743
	6.5" to 9" RH, High Dampening, Extended Rebound	S-23316		Use to replace B-23316
16	SHOCK BOLT KIT	S-24024		Standard and remote mounting
17	REMOTE SHOCK MOUNT			Also order shock bolt kit S-24024
17a	Upper Assembly	A-5431		Includes clevis and shock plate
17b	Lower Assembly	B-2723		Includes shock bracket
18	UPPER SHOCK CLEVIS			
	Standard	S-2592	2	
	For use with Shock Straps	C-20113	2	
19	SHOCK STRAP CLEVIS	B-20919		
20	OFFSET HCV BRACKET	B-23850		
21	SHOCK STRAP KITS			All kits include (2) straps, (2) clevis and (4) nylon ties
	3.5" to 4" RH, Weld-on, Standard Travel	C-23086-11		For use with shock B-23548
	5.5" and 6.5" RH, Weld-on and Bolt-on, Standard Travel	C-23086-3		For use with shock B-23650
	7.5" to 14" RH, Weld-on and Bolt-on, Standard Travel and High Dampening	C-23086-5		For use with shock B-23649 and B-23743
	5.5" and 6.5" RH, Weld-on and Bolt-on, High Dampening	C-23086-10		For use with shock B-23744
	6.5" to 12" RH, Weld-on and Bolt-on, Limited Jounce and Standard Travel	C-23086-5		For use with shock B-23649 and B-23743

Weld-On and Bolt-On refers to suspension frame attachment



Information contained in this literature was accurate at the time of publication. Product changes may have been made after the copyright date that are not reflected.

Trailer Suspension Systems
2070 Industrial Place SE
Canton, OH 44707-2600 USA

866.RIDEAIR (866.743.3247)
330.489.0045
Fax 800.696.4416

www.hendrickson-intl.com